



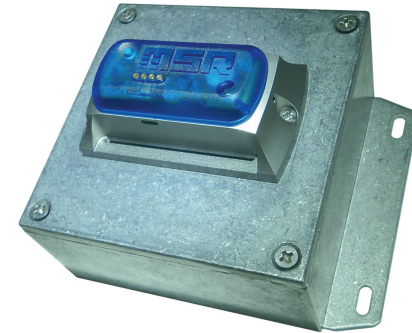
## SD card (optional)

- Prepare the data logger for the measuring process by means of the setup or shock program (see item 3 “Starting data recording”).
- Insert the supplied microSD card into the card slot of the data logger. A green LED above the card slot lights up for approximately 2 seconds to indicate that the SD card can be used.
- To transfer the data from the SD card to your PC after the measuring process, remove the card from the data logger and insert it into your PC, using a card reader.
- Start the MSR PC software and double-click “CARD Reader” to start the program. In the CARD Reader program window, click “Start”.
- In the window that appears subsequently, select the measurement file and click “OK” to confirm. Depending on the data volume, a measurement can be distributed across several measurement files. Click “Next” to read another measurement file.

**Important Notice:** The files on the SD card must not be deleted.



## Brief instructions MSR165 (B52)



You will find software updates and answers to frequently asked questions in the support area at [www.msr.ch](http://www.msr.ch).

MSR Electronics GmbH • Mettlenstrasse 6 • 8472 Seuzach • Switzerland • +41 52 316 25 55



## Battery Replacement

- The Li-SOCl<sub>2</sub> batteries (3.6 V) installed in the logger can be replaced by a person qualified for this task. Adequate ESD protection must be ensured. Only brand-new batteries may be used.
- Before replacing the battery, stop any active data recording on the data logger.

**Important Notice:** The batteries may only be replaced when the data logger is disconnected from the USB cable.

## 1

## Installing the MSR PC software

- Download the installation program for the MSR PC software from the Internet:  
[www.msr.ch/en/support/pcsoftware](http://www.msr.ch/en/support/pcsoftware)
- Launch the installation program and follow the instructions to install the MSR PC software onto your PC.

## 2

### PC connection

- Connect the MSR data logger with your PC with the aid of the USB cable supplied.
- Launch the MSR PC software and double click on "Setup" in the program selection window to launch the Setup program.
- If necessary select in the program window the port of your PC to which the data logger is connected.

## 4

### Transferring data to a PC

- Connect the data logger again to the PC using the USB cable and launch the MSR PC software.
- Double click on "Reader" in the program selection window to launch the Reader program with which the recorded data is read-out and transferred to the PC.
- Confirm that you want to end the measuring process. The list of the measuring processes saved on the data logger is then displayed.
- Select the measuring process you wish to transfer (= "Record") and click on the "OK" button to start the data transfer.
- The name and path of the data file which has been created is displayed in the window of the "Reader" program. At the same time the "Viewer" program automatically opens with which you can view the data as a graph, analyse it and export it via the file menu.

## 3

### Starting data recording

- In the "Main storage rate" field of the setup program window, set the interval "t1", which is to be used for taking and storing measurements.
- In the "Sensors" field, set for each sensor, whether measurements are to be recorded at sensor rate "t1" or whether the sensor is to be switched off ("off"). In order to take a vibration measurement, set the ACC sensor to "~1600 Hz".
- Select the option "Start immediately".
- Click on the "Write basic settings" button to transfer the configuration to the data logger and to start recording.
- You can now disconnect the data logger from the USB cable.



### Taking shock measurements

- Connect the data logger again to the PC using the USB cable and launch the MSR PC software.
- Double-click "Shock" in the program selection window to start the program for configuring shock measurements.
- Click the "Call up assistant" button and follow the steps to configure the data logger for shock measurements.
- To read the data after the measurement has been taken, follow the steps described in item 4 "Transferring data to a PC".